

Head Teachers Welcome



Welcome to St John Ogilvie High School. I hope that this prospectus will provide you with a helpful insight into our school community, our hopes and aspirations for all those who belong to it as well as providing you with useful information on the academic, extra-curricular life and day-to-day running of our school.

As a 6-year Catholic comprehensive, we are a school of faith and learning, with Gospel values such as truth, integrity, love and forgiveness at the core of everything we do.

We want every pupil to be successful and to reach his or her full potential in all aspects of their lives and in doing so understand that God can be found in all things; using our gifts and talents not only for ourselves but also in the service of others. Our success stems from the way we value each and every pupil by providing them with the knowledge, skills and confidence to meet the challenges of our ever changing world. We do this in a purposeful and productive atmosphere.

We expect the highest standards from our students in all aspects of school life, in their attitude to learning and in their personal conduct.

We aim to create a learning culture in which we promote the all-round education of pupils, developing articulate young people who are confident in their own abilities and have high aspirations. A place where young people learn to be leaders for life based on the values, experiences and education promoted in our school.

We are well aware that our success depends on the partnership and involvement of parents and guardians. Any parent will know that no two children are the same. Every pupil offers to our school community something different. The aim of Catholic Education is to educate a child for life, developing the talents of the young person in the fullest possible way thereby transforming their life for the better. We are aware that in choosing to send your child to our school you are making an act of trust. Our aim is to ensure that every child entrusted to our care is made welcome and that in their time here they feel a sense of belonging. We seek to foster an active partnership with parents and guardians to ensure the best possible education for each young person.

We are very proud of our school and the success of all our young people and we hope you will enjoy reading about some of the opportunities we have on offer.

If you would like more information, please do not hesitate to contact me at 01698 727600.

Yours sincerely,

Lorna Lawson

About our School



St. John Ogilvie High School
Farm Road
Burnbank
Hamilton
ML3 9LA

Tel: 01698 727 600
Fax: 01698 727 601

School Website:

www.johnogilvie.s-lanark.sch.uk

Contact Email Addresses:

School Office
office@johnogilvie.s-lanark.sch.uk

Lorna Lawson - Head Teacher
headteacher@johnogilvie.s-lanark.sch.uk

Sean Blake - Depute Head Teacher (S5 & S6)
gw07blakesean@glow.sch.uk

Stephen Brogan - Depute Head Teacher (S3 & S4)
gw15broganstephen@glow.sch.uk

Thomas McConville - Depute Head Teacher (S1 & S2)
gw16mcconvillethomas@glow.sch.uk

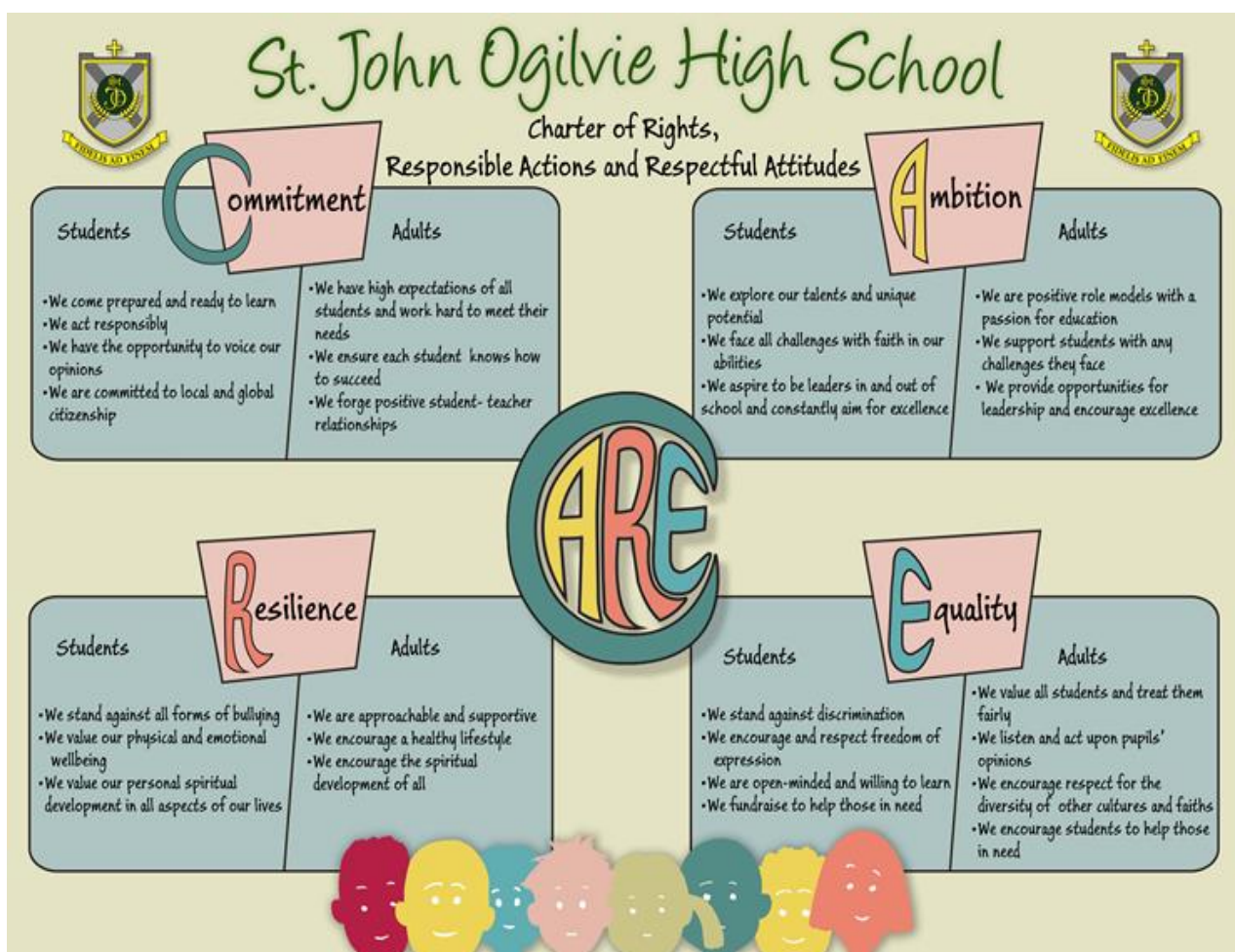
Our School Values

St John Ogilvie High School is one of 19 secondary schools throughout South Lanarkshire Council. It is a 6 year Roman Catholic co-educational comprehensive school, catering for students of all abilities.

Through honouring Jesus Christ as the Way, the Truth and the Life, the mission of St John Ogilvie High School is to develop as a community of faith and learning, to provide the highest quality of education, and to offer formation through the promotion of Gospel values.

On a daily basis our community strives to:

- Offer an inclusive ethos honouring the life, dignity and voice of each person, made in the image of God;
- Create a safe, healthy stimulating and supportive environment based on Christian values;
- Promote a high expectation of achievement, in partnership with staff, students, parents and the wider community;
- Recognise, develop and celebrate each person's unique God-given talents;
- Uphold the moral teaching, faith tradition and sacramental life of the Catholic Church;
- Promote social justice, equality and opportunity for all;
- Develop and understanding and respect for different beliefs and cultures and facilitate the opportunities for inter-faith dialogue;
- Prepare students for their present and future life and work, as responsible, confident and effective members of our society



Ethos and Discipline

The ethos of St. John Ogilvie is centred on the importance of pride in our school and positive relationships, and a commitment to mutual respect and concern for all members of our school community. A full copy of our ethos and discipline policy can be found on our website.

Uniform

For members of this community our uniform plays a vital part in this ethos. Our uniform helps promote the identity of the school in the local community, create a safer environment, and allow all students to be accepted and included without judgement of financial ability.

Our uniform consists of:

- Green blazer and badge
- Black skirt or trousers
- School tie
- White shirt
- Summer dress (optional)
- Green or black v-neck jumper (optional)



Blazers should be worn all year round with all winter jackets removed on entering the building.

In PE students are asked to wear black shorts or jogging trousers and white T-shirt.

Discipline

Based on emphasising and rewarding positive behaviour, students are required to

- Arrive for school and classes on time
- Wear the school uniform and carry all the necessary equipment for learning in their school bag
- Listen carefully and follow teacher instructions
- Show respect at all times
- Complete homework and return it on time

Attendance and Timekeeping

Excellent levels of attendance and timekeeping are encouraged to allow proper learning and teaching to take place, allowing students the opportunity to reach their full potential. When a student is absent we ask that parents and carers notify the school at the earliest time possible and provide a note giving the reason for absence on return.

As a safety precaution parents and carers will be notified via text message that their child is absent from school. It is therefore important that all contact details are kept fully up to date.

Our School Day

The curriculum within St. John Ogilvie is delivered on a 33-period week basis. The school is structured as follows, with three shorter and two longer days:

	School begins	Lunch-time	School closes
Monday	8:50am	12:40 – 1.25 pm	3:05pm
Tuesday	8:50am	1:15 – 1:55pm	3:35pm
Wednesday	8:50am	12:40 – 1.25 pm	3:05pm
Thursday	8:50am	1:15 – 1:55pm	3:35pm
Friday	8:50am	12:45 – 1.25 pm	3:05pm

Facilities

As part of South Lanarkshire Council's Schools Modernisation Programme, a new purpose built 2-storey school campus was opened in August 2008, which has many fine features and facilities. Equipped with the most up-to-date technology, it is ideally placed to furnish students with a relevant, modern curriculum which will serve them for their future.

There are 51 modern and fully equipped classrooms with excellent specialist facilities and a wider range of specialist facilities, all listed below. All classrooms and facilities are easily accessible to those with disabilities.

Specialist facilities

- Oratory
- Design and Technology workshops and Graphics room
- Computer suites
- Food Technology kitchens
- Science laboratories
- Modern language suites
- Hall ('Street area')
- Stage
- Medical Suite
- Pastoral and interview rooms
- Parents waiting room
- Private study room

Sports facilities

- Games Hall
- Gymnasium
- Netball / basketball courts
- Flood-lit, all weather pitch
- Dance studio

Canteen

Our canteen provides high quality, food every morning (Breakfast Club 8:00-8:45), interval and lunchtime via a cashless system. Students use swipe cards which they can charge with credit at machines found in the social areas. A large variety of healthy food options are always available including a salad and pasta bar and a 'build your own baguette' station. Some students may be eligible for a 'free school meal'. For more information please see the SLC website.

Curriculum

The curriculum offered within St. John Ogilvie High School aims to satisfy the academic and vocational needs of all students through a variety of traditional and alternative subject choices, in a range of levels of difficulty. The school is divided into 2 main stages:

- S1 – S3 Broad General Education Phase
- S4 – S6 Senior Phase

Broad General Education

Up until the end of S3, pupils will experience a broad general education which includes the study of:

- Science
- Modern languages and literacy
- Mathematics and numeracy
- Social studies
- Expressive arts
- Health and wellbeing
- Religious and moral education
- Technologies

This broad based curriculum provides a firm foundation upon which the range of knowledge and skills for learning, life and work are built. Emphasis is placed on teaching methodology as well as teaching knowledge and understanding and development of skills.

At the end of S1, a degree of personalisation and choice is undertaken whilst maintaining coverage of the eight curricular areas. This choice allows for specialisation and greater depth of study enabling pupils to take greater responsibility for their own learning and to begin making decisions about their own education. This helps to sustain motivation and focus while allowing time for more in-depth development of skills and knowledge across the curricular areas.

During S2 and S3 pupils are also given the opportunity to experience a variety of other subjects through interdisciplinary learning (IDL projects) and Skills for Learning, Life and Work (SLLW) projects, allowing pupils to make connections in their learning and to apply the skills and understanding they have acquired within subjects in different contexts.

S2 IDL courses available

- CSI Burnbank
- Drama
- Games Design & Development
- Mission Mars
- Music Tech
- Spanish Culture
- Sport

S3 SLLW Projects available

- Stop Motion Animation
- Love to Dance
- Film Production

- Jewellery and Metal Work
- Laser Design
- Mindfulness
- Music
- Print Making
- SFA Refereeing
- Sports Leaders

Senior Phase

S4 heralds the start of the Senior Phase. National Qualifications – National 3, National 4, National 5, National 6 (Higher) and Advanced Higher, will be followed with appropriate SQA presentations at the end of S4, S5 and S6.

Foundation Apprenticeships are also an option for pupils in S5 and S6. They combine college based learning with work experience over a 1 or 2 year course working at the equivalent to a Higher (Level 6) and can lead to full time study at college or university or Modern Apprenticeships in industry. Foundation Apprenticeships include:

Accountancy	Creative Digital Media
Business Skills	Financial Services
ICT	Children & Young People
Engineering	Scientific Technologies
Social Service & Healthcare	

At the end of S3, students will follow 7 subjects including English and Maths. This will be reduced to 5 subjects in S5 and 3-5 subjects in S6.

National Qualification Subjects available

- | | |
|----------------------|-------------------------------|
| • English | • Art |
| • Maths | • Photography |
| • Spanish | • Geography |
| • French | • History |
| • ESOL | • Modern Studies |
| • Biology | • Religious & Moral Education |
| • Chemistry | • Business |
| • Physics | • Administration |
| • Human biology | • Computing |
| • Graphics | • Accounting |
| • Woodwork | • Games Design |
| • Hospitality | • Music |
| • Home Economics | • Practical Woodworking |
| • Cake Decoration | • Travel & Tourism |
| • Physical Education | • Dance |

Students will also be able to enhance their traditional academic qualifications through National Progression Awards (NPAs) with courses and placements in Sports and Dance Leadership, Dynamic Youth Awards, Youth Achievement Awards, Skill Force, What's with Work, Count Us In Project, ACTIVATE, CARITAS and the S6 JOHS Diploma which recognises wider achievement.

Support for Pupils

Getting it right for every child

Getting it right for every child is a partnership commitment to ensure that your child has the best possible start in life, based on a shared understanding of their wellbeing. Most of the time, most children get all of the support they need from their families, with help from universal education and health services. When needed, the named person in education can offer help and support to children and families to make sure that the child's wellbeing is developing and that any issues are being addressed.

If you have any concerns about your child's wellbeing, you can speak to the named person who will work with you to ensure that your child gets the right help from the right person at the right time. Your school will let you know who this is. It is likely to be the Head Teacher in a primary school and a principal teacher (pupil support) in Secondary.

More information can be found on: www.girfecinlanarkshire.co.uk and www.scotland.gov.uk/gettingitright

Additional Support

Pupils with additional support for learning needs receive sensitive and sympathetic support as required. This support begins at the transition between primary and secondary and continues throughout the young person's St. John Ogilvie career. Some of these needs relate to difficulty in accessing the curriculum because of barriers to learning and understanding. Other needs may relate to social, emotional, physical or behavioural issues. The Support for Learning Team, alongside Pupil Support, liaises to ensure that all pupils' needs are met. These teams have developed strong links with partnership agencies across the authority tapping in to a wide variety of support mechanisms

Enquire is funded by the Scottish Government to provide information on the framework for supporting children who require additional support for learning and to encourage positive partnerships between families, schools and local authorities to ensure children get the right support.

Enquire – the Scottish advice service for additional support for learning

Enquire offers independent, confidential advice and information on additional support for learning through:

Phone Helpline: 0845 123 2303

Address : Enquire

Children in Scotland

Rosebery House

9 Haymarket Terrace

Edinburgh

EH12 5EZ

Email Enquiry service: info@enquire.org.uk

Advice and information is also available at www.enquire.org.uk

Enquire provides a range of clear and easy-to-read guides and fact sheets including The parents' guide to additional support for learning.

If you would like to order our leaflets, postcards or guides to share with parents and carers of pupils in your school, please contact us on info@enquire.org.uk

Attachment Strategy for Education Resources – Insert for School Handbook

Attachment – what we do to support children and young people

South Lanarkshire Council Education Resources is committed to improving outcomes for children and young people by creating emotionally supportive learning experiences in our nurseries and schools.

The Education Resources Attachment Strategy was launched in March 2019 and supports the action in the Getting It Right for Every Child in South Lanarkshire's Children Services Plan 2017-20 – 'Develop an attachment strategy and to inform training for staff working with early years to secondary aged children and young people on attachment-informed practice'.

What does it set out to do?

The aim of the strategy is to promote better experiences of attachment for South Lanarkshire's children and young people and to ensure that all education practitioners understand the importance of attachment and how positive relationships can make a difference to outcomes.

How can I find out more?

South Lanarkshire Council Education Resources have published a series of leaflets and posters for parents/carers which aim to share information on attachment theory and on how this can inform the ways in which we support children and young people.

These are available from schools and we have plans to make them available on-line.

Religious Education

As a catholic school, a strong emphasis is placed on Christian learning and living. Our religious Education programme is based on 'This is Our Faith' and structured to ensure that pupils develop a deeper and lasting knowledge and understanding of their faith, and a respect of other world views.

All pupils from S1-S6 receive 2 periods of RE per week and can opt to study Religious, Moral and Philosophical Education to Higher level in S6.

St John Ogilvie High School is in the fortunate position of having a school chaplain. Masses and Eucharistic services are celebrated in the school Oratory on a weekly basis with all Holy days of Obligation observed. At certain points in the year Penitential services are also organised.

An extensive Retreat Programme is also available, ensuring that all pupils are given the opportunity to reflect on their spiritual journey.

Personal and Social Education

All students follow a Personal and Social Education programme which promotes self-awareness, self-esteem, skills for learning, life and work, and an understanding of the process of growing up.

Through group work, individual work and discussion, students explore cross-curricular themes of Health and Wellbeing, Rights and Responsibilities, Citizenship and Careers Education. Skills for Life, Learning and Work are also explored through developing study techniques, coping financially, job applications and job interviews.

In PSE and RE students explore topics of human relationships within the moral framework of the programme 'Called to Love', which emphasises respect, responsibility and the value of family life.

Homework

St John Ogilvie High School places a strong emphasis on learning which takes place outside the school day. Homework assignments play a valuable part in each student's education and may include:

- Research
- Factual or imaginative writing
- Reading
- Learning
- Revision
- The completion of coursework

Why is homework given?

- To reinforce learning and consolidate work done in class
- To develop good habits of study
- To encourage students to develop self-discipline and adopt a conscientious attitude to work
- To extend the educational opportunities and experience available in school
- To provide opportunities for parents and carers to support their child and co-operate with the school

How much homework is given?

The quantity of homework will depend on the stage of the student and the course followed. As a rough guide, students are expected to spend the following time per week:

- S1 – S3 2 – 5 hours
- S4 3 – 7 hours
- S5/6 10 hours

In S1/S2 students are encouraged to keep a homework diary which should be signed by parents on a weekly basis. Students failing to complete homework or miss deadlines may receive a Homework Letter. Letters are sent out to parents on a monthly basis for S1 – S4 and fortnightly for S5/6.

Parents and carers should contact Pupil Support or Depute Headteachers if homework is causing a problem, or if in any subject their child seems to have too little or too much.

Monitoring of Progress

Parents are regularly informed of their children's progress. This is done informally through jotters and homework diaries and formally through Tracking and Full Reports, which are sent out for every year group. Each year group also has a scheduled Parents' Evening allowing progress to be discussed in detail with teaching staff.

Other initiatives such as S1 'Pupil of the Week', the S1 'October Review', S2-4 Letters of Commendation and Concern, S3/4 'Key Marginals' and 'High Fives', and the S5 Assertive Mentoring Programme, all focus on close monitoring of students. Homework and General progress letters are also used regularly to update parents.

Our Pastoral Care team liaise regularly with parents and carers to ensure they are kept fully up to date with any issues relating to their child's progress.







Pastoral Care

Tutor Group

When students enrol in St John Ogilvie they are allocated a Tutor Group and Tutor Teacher. They will see this teacher three times per week allowing staff to get to know them well. In most instances this Tutor teacher will follow the same students from S1 through to the end of S4.

Pupil Support

Each pupil is also appointed a Pupil Support teacher who will follow them as they move from S1 to S6. This system allows each pupil to be known as an individual, have his/her needs catered for and valued as a person.

		
Mrs Adkins A	Mrs Watson A	Miss Mooney B
		
Mrs Martin C	Mr Morris D	Mr Ferguson E

Year Head

Each year group is assigned a Year Head whose remit is to oversee the academic, spiritual, and social development of all students. Year Heads have been allocated as follows:

		
DHT S1/2 Mr T McConville	DHT S3/4 Mr S Brogan	DHT S5/6 Mr S Blake

Assemblies

On a weekly basis, students attend assemblies in year groups. These provide an opportunity for staff and students to pray together and promote school values, whilst disseminating information. They also allow us to recognise and celebrate the wider achievements of all students and develop leadership and enterprise through student led presentations and talks.

Relationships

As enshrined in our School Charter, St John Ogilvie High School promotes a culture that is inclusive, based on respect and dignity. It fully recognises that it sits within a community where the relationship between students, teachers, parents and the wider community are of the utmost importance.

Careers

Based within our Careers Hub there are two Careers Advisers, Fiona Laing and Mark Mckay, who work closely with Pupil Support to ensure there is an extensive Careers programme available within the school through curricular programmes and extra-curricular support.

Practical Information

School Meals

Healthy eating is something that the school supports and a range of meals are available at lunchtime that meet the Schools (Health Promotion and Nutrition) (Scotland) Act 2007 and the Nutrient Requirements for Food and Drink in Schools (Scotland) Regulations 2008.

The secondary school menu includes a range of options available from breakfast, mid-morning and lunchtime.

- A range of meal deals for only £1.70 consisting of a selection of hot meals served with selection of soup or fruit pot or yoghurt or 500ml water
- A selection of snacks that are individually priced including panini, pizzini and freshly prepared baguettes and sandwiches with selection of fillings
- “Beat the Queue” pre-order service where children can choose their meal and pay for it in the morning for convenience and pick it up during lunch break avoiding queuing

Free School Meals

Children of parents who receive the following benefits are entitled to a free lunchtime meal for their child

- Income Support, Universal Credit (where your take home pay is less than £610 per month), Job Seeker’s Allowance (income based), Employment and Support Allowance (income related), Working Tax Credit and Child Tax Credit (where your gross annual income does not exceed £6,900 as assessed by the HM Revenues and Customs), Child Tax Credit Only (where your gross annual income does not exceed £16,105 as assessed by the HM Revenues and Customs) or receive support under Part VI of the Immigration and Asylum Act 1999. (Please check current criteria with SLC website – there is auto enrolment)

If you are in receipt of Housing Benefit and/or Council Tax Reduction from us there is no need for you to apply online, we will use the information we hold to automatically award free school meals (P4 to S6) and/or school clothing grants (P1 to S6) to eligible families.

We would encourage parents of pupils who are in receipt of any of the above benefits to take up the opportunity of having a meal provided for their child when they are at school. All secondary schools operate a cashless school meals system which protects the anonymity of pupils entitled to a free school meal.

We also encourage all pupils to remain in school at lunch times.

Education Maintenance Allowance

Forms are available from South Lanarkshire Council website www.southlanarkshire.gov.uk

Transport to the School

School transport

South Lanarkshire Council has a policy of providing school transport to Secondary pupils who reside more than **two** miles from their catchment school by **the** recognised shortest safest walking route. This policy is more generous than the law requires. This means that the provision of transport could be reviewed at any time. Parents who consider they are eligible should obtain an application form from the school or Education Resources, Hamilton, phone **0303 123 1023** or web www.southlanarkshire.gov.uk. These forms should be completed and returned before the end of March for those pupils starting the school in August to enable the appropriate arrangements to be made. Applications may be submitted at any time throughout the year and will be considered by Education Resources.

A paid privilege transport scheme is operated for mainstream school contracts where a pupil is not entitled to free school transport. Privilege transport will only be granted providing there is spare capacity on an existing school contract and will be from and to designated pick up and drop off points. Privilege transport will not be provided where a service bus is used on the school run. Any spare capacity will be allocated using agreed priorities. For more information on school transport contact Education Resources phone **0303 123 1023**.

Many bus services are suitable for travelling to St. John Ogilvie High School.

Services that stop outside the school – 226 XI. Services that stop within 200m of the school in High Blantyre Road / Main Street, Burnbank – 263, 267, 67, 228, 201

Child Protection

All staff in educational establishments in South Lanarkshire Council are required to receive an annual update and follow the advice and guidance contained within the Education Operating Procedures. All staff must also complete a Learn on Line Course “Child Protection in Education”.

The vision for children and their families in South Lanarkshire is to ensure that they live in a community where they are safe, healthy, active, achieving, respected, responsible and included. They should be part of a society where they have the opportunity to maximise their full potential and have access to good health care, education and leisure services. In order to achieve, South Lanarkshire’s children’s services and its partners will work jointly to support children, young people and their families and are committed to continuously improve our services to ensure children, young people and their families get the support that is appropriate for them.

The Chief Officers and Child Protection Committee are the driving force for ensuring that agencies individually and collectively work to protect children and young people as effectively as possible.

The Council has a duty in law to report any suspicions that a child has been abused or is at risk of harm, abuse or neglect. Therefore, Council staff have a professional and contractual obligation to report concerns to the head of establishment or the child protection coordinator immediately.

Education Resources staff and visitors from other agencies and services are required to follow these Child Protection Procedures to protect and support children and to fulfil their professional obligations to report all allegations or suspicions of child abuse.

For more information, or if you have a concern of a child protection nature, please contact the head of the educational establishment which your child attends.

The Child Protection Committee's website has a range of information for parents/carers on how to help ensure their child is safe. The website is: www.childprotectionsouthlanarkshire.org.uk

Information on emergencies

We make every effort to ensure the school remains open during term-time for pupils. However, on occasions circumstances may arise which can affect the school. Schools may be affected by, for example, severe weather, power failures or through any other circumstances that may impact on the school day. In such cases we shall do all we can to let you know if this happens. We shall keep you in touch by telephone, text, where appropriate, letters, web news and through local radio stations particularly if there are prolonged periods of severe weather. The Council's website www.southlanarkshire.gov.uk will be used to let you know if the school is closed and when it will re-open.

It is important for parents/carers to let the school know of any change to your mobile/home telephone number and change of address.

If for any reason, you are unsure if the school is open visit the website www.southlanarkshire.gov.uk or email us at: education@southlanarkshire.gov.uk

Transition

Pupils normally transfer from primary to secondary school between the ages of 11½ and 12½, so that they will have the opportunity to complete at least 4 years of secondary education. Arrangements are made by the school to transfer children to the associated secondary school as determined by their home address. Parents of P7 children will be informed of the transfer arrangements made for their child to attend secondary school.

From as early as early as primary 5 teachers from across the St John Ogilvie Learning Community work closely to make the transition from primary school to secondary school as seamless as possible. Our associated primaries are;

St. Blane's, Blantyre

St. Cuthbert's, Burnbank, Hamilton,

St. Joseph's, Blantyre

St. Mark's, Little Earnock, Hamilton

St. Ninian's, Hillhouse, Hamilton

St. Peter's, Laighstonehall, Hamilton

In primary 7, all students follow an induction programme which involves a bridging unit called 'Journey to Ogilvie', a wide range of curricular projects, a 2-day visit to the High School, and various newsletters and competitions. Parents are also invited to attend an information evening where they can hear how their child will be supported in the High School and learn what opportunities St John Ogilvie has to offer.



Normally children attend the school in their catchment area. However, there are times when parents may wish their children to go to other schools. If you wish your child to go to another school then you may make what is known as a 'placing request'. If you live in South Lanarkshire and decide to submit a 'placing request', we are unable to reserve a place in your catchment school until the Council have made a decision on the 'placing request'. Please note if your 'placing

request' application is unsuccessful and all places at your catchment school are filled you will be offered a place at the next nearest appropriate South Lanarkshire School.

Please note that if an application for a 'placing request' is successful then school transport is not provided.

If you move outwith your catchment primary school a 'request to remain form' must be completed. If you move outwith your catchment primary, this may affect your right to transfer to the associated Secondary School. Please note the secondary school is determined by the pupil's permanent home address and chosen denomination. If you require further information, please contact Education Support Services on **0303 123 1023**.

Bullying

Values

In our school we are a faith and learning community promoting social justice, equality and opportunities for our pupils in all that we do. We strive to create an environment which our pupils and parents believe to be safe, happy, disciplined, purposeful and productive.

We are committed to the view that ALL members of the school community; pupils, staff and parents have a shared responsibility to ensure that a climate exists where all forms of bullying are unacceptable and will not be tolerated.

Our stance on bullying

Like all schools, St John Ogilvie High School is fully committed to the elimination of bullying. Bullying in any form can leave victims hurt distressed and frightened which may prevent pupils from feeling safe and happy and so impact on their ability to achieve their full potential. Any kind of physical bullying is very rare at St John Ogilvie High School but we are aware that verbal harassment can cause as much anguish.

Our school policy has been formulated to ensure that strategies we adopt are effective in dealing with all kinds of relationship difficulties that pupils may experience including bullying. In St John Ogilvie we try to deal with cases as quickly as possible and always in a sensitive way.

The topic of bullying is frequently highlighted through our weekly year group assemblies, in PSE as well as in other areas of the curriculum.

Our school policy on bullying is also given high priority on the walls around the school sending a clear and unambiguous message to our school community regarding our rejection of all forms of bullying.

Cyber Bullying

We also endeavour to highlight the fairly new issue of 'cyber bullying' via mobile phones and all forms of social media. We speak regularly to pupils about the issues surrounding this type of technology and the use of it.

Parents, carers and pupils who report bullying can expect to be listened to and have their concerns taken seriously. Pupil Support staff will communicate with parents, carers and pupils updating them on progress and actions. Please see our school policy (available on the school website) on Bullying for further details.

Parents

South Lanarkshire Council recognises the importance of parents as partners in the education of their child and has published a strategy entitled, 'Making a difference – working together to support children's learning'. This is available from the Council's website:

www.southlanarkshire.gov.uk

Parents, carers and family members are by far the most important influences on children's lives. Children between the ages of 5 and 16 children spend only 15% of their time in school! Research shows that when parents are involved in their child's learning, children do better at school and throughout life. Parental involvement can take different forms but we hope you share the same aims and agree that by working together we can be partners in supporting children's learning.

Some useful information contacts for parents to find out more on education are as follows:-

- Parentzone – www.parentzonescotland.gov.uk
- Engage Parent Forum – www.engageforeducation.org
- National Parent Forum for Scotland – www.educationscotland.gov.uk/parentzone
- South Lanarkshire Council – www.southlanarkshire.gov.uk

In addition to Parents' Evenings parents are welcome to visit the school during the day and speak with senior and pupils support staff.

Newsletter

A regular newsletter keeps parents informed about what is going on in the school.

Myschoolapp

Parents are encouraged to download our school app which allows instantaneous announcements to be delivered straight to their phone. Parents continue to find this very helpful. Full instructions are available from the school.

Web Site

Our school web site can be found at www.johnogilvie.s-lanark.sch.uk This site is updated on a weekly basis and provides access to pupil and parent information such as the Supported Study programme, clubs and activities, learning links and information evening and reporting dates.

Parent Forum

St John Ogilvie High School has a long history of working in close partnership with parents. Parents support the school in a variety of ways on a daily basis and in a more formal setting through the Parent Forum. Within our school the forum consists of two parts; the Parent Teacher Association and the Parent Council.

Parent Teacher Association (PTA)

On a less formal basis, parents and teachers gather monthly to discuss ways of supporting and enhancing the school curriculum through organising and supporting events, seeking financial support through application for educational grants and general fundraising. Committee members are elected at the annual general meeting.

Meetings are held in the school at 6pm on the last Wednesday of the month. Minutes of all meetings can be found via the school web site. New members are always welcome.

Parent Council

On a more formal basis parents, staff and representative from the Catholic Church with the Headteacher acting as a professional adviser also meet monthly. Committee members are elected at the annual general meeting. The duties of the council are to:

- Encourage links between the school and wider parent population of the school
- Take part in the selection of senior promoted staff to the school
- Discuss and approve the plans for the purchase of educational resources
- Discuss statistical evidence of school performance
- Receive reports from the Headteacher and local authority

Meetings are held here in the school at 6pm on the first Wednesday of the month. Minutes of all meetings can be found via the school web site. New members are always welcome.

Friends of St John Ogilvie

Here in St John Ogilvie students are taught that their skills, gifts and talents should also be used for the service of others in their school, local, national and global communities:

“In the end a person is only known by the impact they have on others”

St Vincent de Paul

Helping the most vulnerable in our local community, students raise funds to support the St Vincent de Paul Christmas Hamper appeal. Each year, with the help of the RE department, student’s source, build and deliver hampers.

St Andrews Hospice

As Business Partners since 2010 St John Ogilvie High School is committed to supporting St Andrew’s Hospice through fundraising from S1 to S6.



Staff and pupils raising funds for St Andrew’s Hospice

The Religious Education Department in St John Ogilvie High School focuses on the key understanding that all people are made in the image and likeness of God. Our students are actively encouraged to help support one another, as children of God, in the wider community on a local and global scale.

Students from S1-3 focus on the work of Mary’s Meals, and through Advent and Lenten charity events, raise funds to help sustain the nourishment and education of some of the most vulnerable children across the world.

S4-6 students work in partnership with SCIAF. Through Advent and Lenten appeals and the SCIAF talented fundraisers project, young people develop a sense of purpose and recognise their responsibilities as part of belonging to the global Catholic Community.

Closer to home, our Pope Benedict XVI Caritas Award group work with the “Memories Tea Room”, a Dementia Café for adults living with the condition and their families. This involves developing a rapport with people from various walks of life, building a trust, empathising with others and ensuring that they maintain and uphold the dignity of each person they interact with.

Extra – Curricular Life

Music

St John Ogilvie High School has an excellent reputation for music. Our Junior and Senior Concert Bands, our Swing Band, and choirs are renowned for their talents and popularity and are always in demand to give public performances. The extensive resources in the Music Department allow many pupils to receive lessons in a range of different instruments and the standard attained gets better each year.

Drama and Dance

Through the S2 IDL and S3 SLLW projects, the Glee Club, the school show, and the Dance Showcase students can participate fully in a drama programme. Workshops on themes such as substance abuse, knife crime and peer pressure use drama and dance to get their hard-hitting messages across.



Public Speaking

A highly active and successful debating club exists in the school. Members look forward to regular debates in school and in local and national interschool public speaking competitions.

Sports

A large number of sporting activities are available in the school from football and rugby, to trampolining, badminton, table tennis and cheerleading. Students are encouraged to keep fit and participate in clubs.

Trips Abroad

Trips to Spain, France, Belgium and Austria take place regularly for students of all ages, widening their experience of the world in which they live.



Trip to Salou

Day Excursions

A large variety of day excursions are also on offer to students. Many of these trips are curricular based such as city visits, and trips to museums and power stations. Fun trips also take place such as the annual trip to the Christmas pantomime and Alton Towers.

School holiday Dates Session 2019/2020

Break	Holiday dates		
First Term	Teachers In-service	Tuesday	13 August 2019
	In-service day	Wednesday	14 August 2019
	Pupils return	Thursday	15 August 2019
September Weekend	Close on Re-open	Thursday Tuesday	26 September 2019 1 October 2019
October Break	Close on Re-open	Friday Monday	11 October 2019 21 October 2019
	In-service day	Monday	18 November 2019
Christmas	Close on Re-open	Friday Monday	20 December 2019 6 January 2020
Second Term			
February break	Close on Closed on	Friday Monday and Tuesday	7 February 2020 10 February 2020 11 February 2020
	In-service day	Wednesday	12 February 2020
Spring break/Easter	Close on Re-open	Friday Monday	3 April 2020 20 April 2020
Third Term			
Local Holiday	Closed	Monday	4 May 2020
	In-service day	Tuesday	5 May 2020
Local Holiday	Close on Re-open	Thursday Tuesday	21 May 2020 26 May 2020
Summer break	Close on	Wednesday	24 June 2020
Proposed in-service days	Tuesday 11 August 2020 and Wednesday 12 August 2020 Pupils return Thursday 13 August 2020		

Notes

- ◆ Good Friday falls on Friday, 10 April 2020
- ◆ *Lanark schools will close Thursday, 11 June 2020 and Friday, 12 June 2020*
- ◆ Schools will close at 2.30pm on the last day of terms 1 and 2 (Friday, 20 December 2019 and Friday, 3 April 2020)
- ◆ Schools will close at 1pm on the last day of term 3 Wednesday, 24 June 2020